

# EMA (Energy Market Access)

## What is Trayport EMA?

### OTC PHYSICAL MARKETS

Trade European physical OTC power and gas directly in the wholesale broker markets via the counterparty credit lines of DMA providers currently offering this service on Trayport.

### EXCHANGE TRADING

If you are trading on the Exchanges available on Trayport using Joule, you can confidently trade within the limits agreed with your GCM (General Clearing Member).

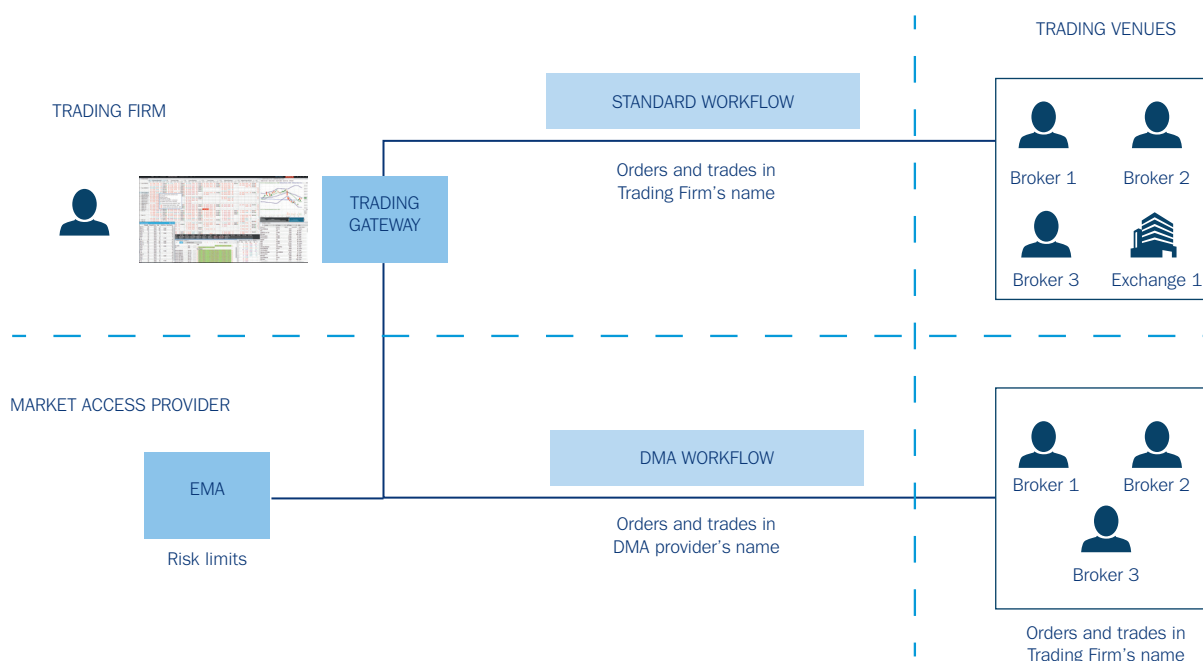
## Why EMA?

### SPEED TO MARKET

You can start trading and/or access new markets through a single relationship with a DMA provider enabling you to trade in a shorter timeframe and access new markets where you currently do not have counterparty credit.

### SIMPLICITY

Trayport EMA is available in Trayport's Joule screen, combining trading under your own company's name with your DMA trading all within Joule. It will ensure that you can trade confidently up to the limits agreed with your DMA provider.

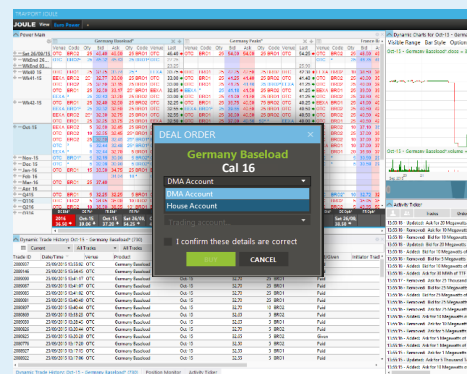


## Joule trading screen

Trayport's Joule trading screen is the leading trading solution for energy markets.

- See better prices
- Faster execution
- Optimally configured desktop

The combination of these benefits make it the preferred choice for many market participants.



✉ For further information please contact [sales@trayport.com](mailto:sales@trayport.com)  
 ☎ Contact us on +44 (0) 20 7960 5511

Any trading activity is conducted with the specific trading venue. Trayport is a software provider of trading solutions and is not a trading venue. Trayport does not arrange investments or provide investment advice.

Offices located in London (+44 (0) 20 7960 5500), New York (+1 212 232 5400) and Singapore (+65 65213108)  
 Trayport Limited is registered in England and Wales (Registered No. 02769279) 7th Floor, 9 Appold Street London EC2A 2AP

[www.trayport.com](http://www.trayport.com)