

# TRAYPORT

A TMX COMPANY



## JOULE

**THE LEADING TRADING  
SOLUTION FOR ENERGY  
MARKETS**

---

# JOULE

In today's rapidly evolving markets, you need tools that give you the competitive advantage and an enhanced trading experience. Joule is a single sophisticated application that connects to all your permissioned venues - simplifying best price discovery and providing enhanced analysis and execution.

## SIMPLIFY BEST PRICE DISCOVERY

### THE PLATFORM FOR CHOICE

- **OVER 40 BROKERS AND EXCHANGES**
- **300+ TRADER FIRMS**
- **4900+ TRADER SUBSCRIBERS**
- **20+ THIRD PARTY SOLUTIONS PROVIDERS**

### COMPREHENSIVE GLOBAL NETWORK



- Trade power, gas, coal, emissions, iron ore, freight and oil
- 20+ power markets incl. German, UK, Nordic
- 15+ gas markets incl. TTF, NBP, CME (Henry Hub)

### ENHANCED MARKET VIEWS

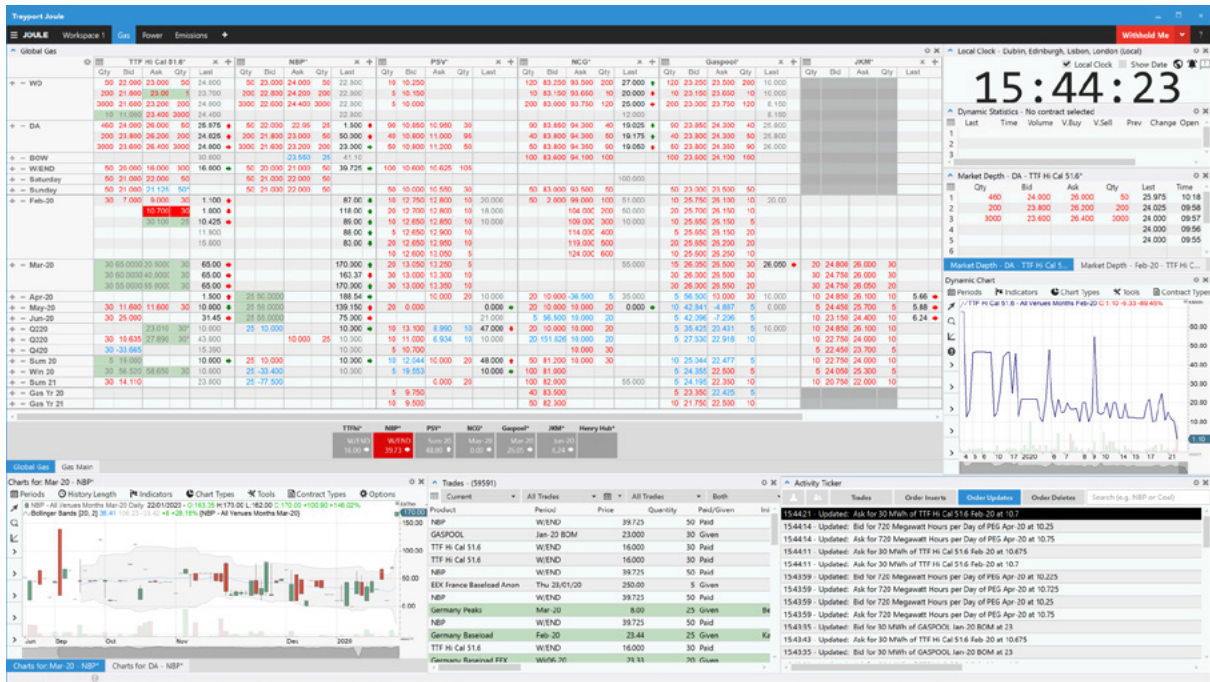
- The Global Gas and European Emissions screen - get a complete view of the worldwide global gas market and European Emissions marketplaces
- A full range of contracts - from spot to years ahead
- Prices not available elsewhere - including implied and spreads.



# ADVANCED TRADING AND ANALYTICS TOOLS

## DON'T MISS OPPORTUNITIES

- Don't miss opportunities - see the market in one place and make informed trading decisions
- Enhanced trading tools such as Automated Trading allowing you to run additional execution strategies and stay close to the market
- Historical and technical analysis capability built in for a transparent view of the market



## ACCESS MARKETS ON THE GO

See live markets on your mobile device.

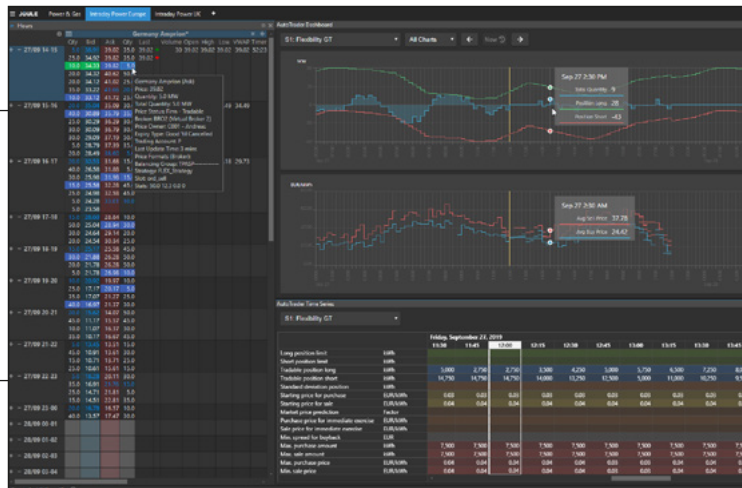


## LEADING-EDGE ALGORITHMIC DESIGN AND EXECUTION CAPABILITIES

Joule now supports autoTRADER, the complete solution for manual and automated trading.

## COMBINED TRADING METHODS

## CONTROL



## MULTIPLE VIEWS

## TIME SERIES VIEW

### Trayport Joule offers more:

- Execute volume faster using the Joule deal volume and powersweep tools
- Quickly deal order directly from Watchlist and Market Depth windows using the Quick Deal buttons.

### Contact us now to see how you can benefit:

Email: [clientmanagertraders@trayport.com](mailto:clientmanagertraders@trayport.com)  
Tel: +44 (0) 20 7960 5511

Please see overleaf for further information and additional contact details.



# TRAYPORT

A TMX COMPANY



For general enquiries, please email  
**info@trayport.com** or call us on  
**+44 (0) 20 7960 5500**

Offices:



EMEA & Americas +44 (0) 20 7960 5500  
Singapore - Asia Pacific +65 65213108  
Vienna - Trayport VisoTech +43 1 6092290



To access Joule online Help click the ? icon in the  
top right corner of the Joule screen and select 'Help',  
or press F1

Any trading activity is conducted with the specific trading venue. Trayport is a software provider of trading solutions and is not a trading venue. Trayport does not arrange investments or provide investment advice.

Trayport Limited is registered in England and Wales (Registered No. 02769279) 7th Floor, 9 Appold Street London EC2A 2AP

[www.trayport.com](http://www.trayport.com)

